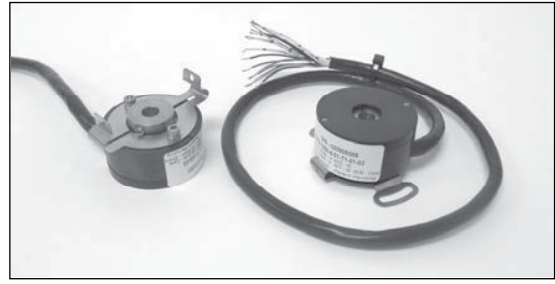
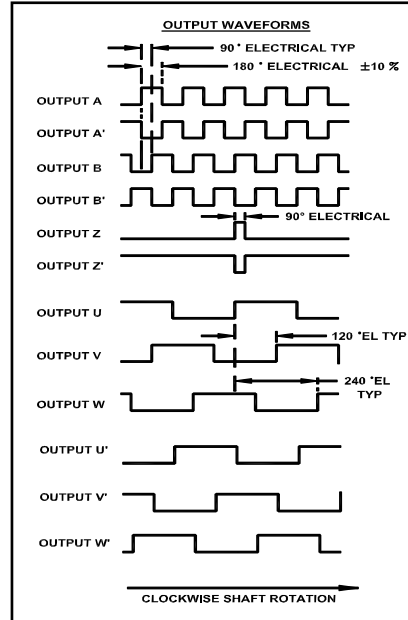


- Output Channels - A, B, Z, U, V, W
- Differential Line Drivers, all channels
- IP 40 Rated
- Power Requirement - 200 mA @ 5VDC
- 500 kHz Maximum Operating Frequency
- Inertia - .00015 oz-in-sec² (.0159233 kg-cm²)
- 1 degree (mech) accuracy of commutators
- Factory installed only

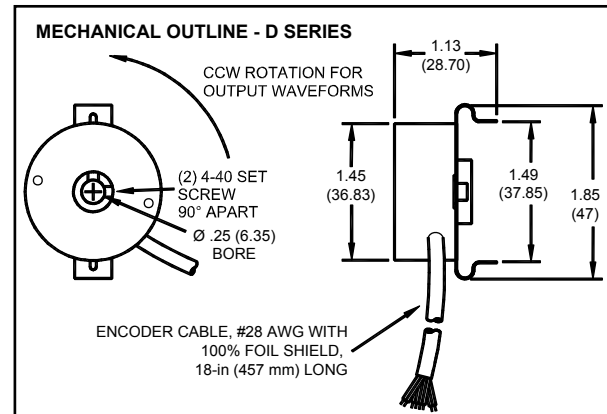
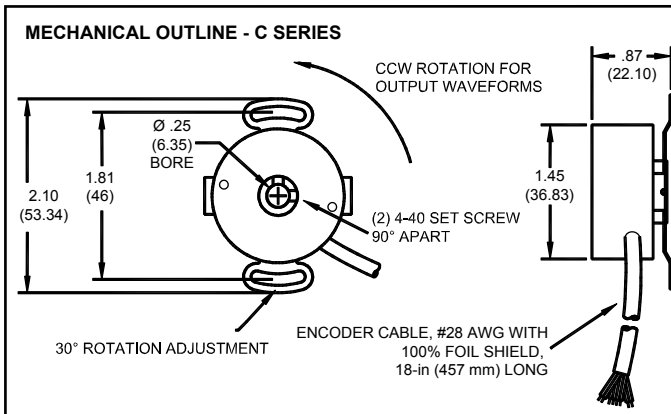


Catalog Number	Style	Resolution	Motor Poles
C1	Standard	1000	4
CA	Standard	1000	8
D1	Small Dia.	1000	4
C3	Standard	2000	4
CC	Standard	2000	8
D3	Small Dia.	2000	4
C5	Standard	2500	4
CE	Standard	2500	8
D5	Small Dia.	2500	4
C8	Standard	5000	4
CH	Standard	5000	8
D8	Small Dia.	5000	4

Note: Other line counts are available for special order



Encoder Connections	
COLOR	FUNCTION
Red	VDC (+5V)
Black	Common
Brown	Output A
White	Output A'
Blue	Output B
Green	Output B'
Orange	Output Z
Yellow	Output Z'
Violet	Output U
Gray	Output U'
White / Brown	Output V
White / Red	Output V'
White / Orange	Output W
White / Yellow	Output W'
Black / White	Case Ground
Drain Wire	Cable Shield



Application Note:

These are High Quality Encoders with integral bearings and flex mount which eliminate any alignment issues due to mounting. They feature the standard data channels and also precision "absolute" channels for the commutation of Brushless Motors. All outputs have differential line drivers which are commonly used by "Digital" drives and significantly reduce noise issues, especially with longer cables. These units are factory mounted on the motors and aligned to the motor's electrical properties which allows "drop-in" replaceability without the need to "initialize" each new motor.

This document is for informational purposes only and should not be considered as a binding description of the products or their performance in all applications. The performance data on this page depicts typical performance under controlled laboratory conditions. Actual performance will vary depending on the operating environment and application. AMETEK reserves the right to revise its products without notification. The above characteristics represent standard products. For products designed to meet specific applications, contact PITTMAN Motor Sales Department.

PITTMAN PRODUCTS
343 Godshall Drive, Harleysville, PA 19438
USA: +1 267 933 2105 - Europe: +33 240928751 - Asia: +86 21 5763 1258
www.pittman-motors.com